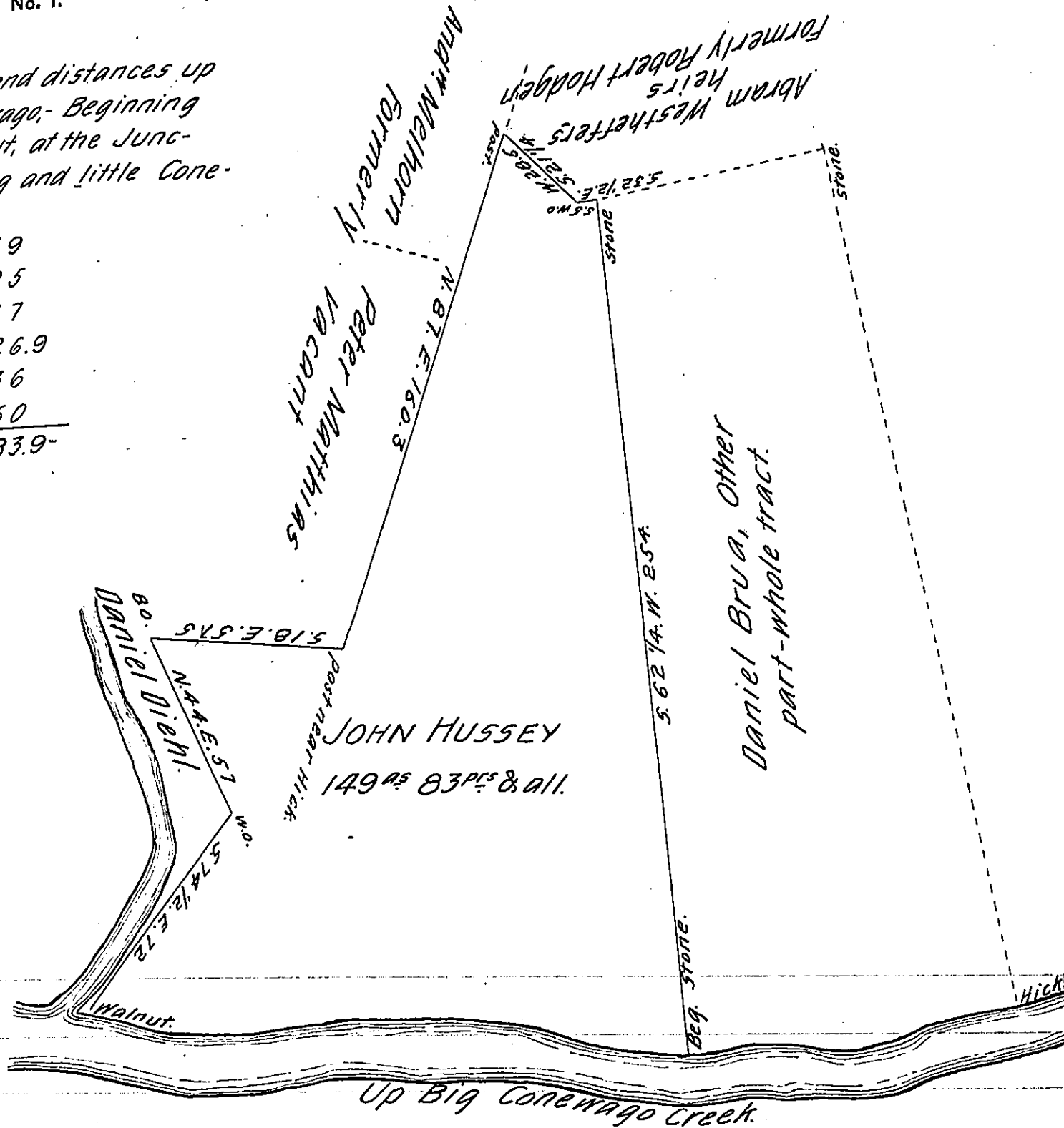


Courses and distances up
Big Conewago, - Beginning
at a Walnut, at the Junc-
tion of Big and Little Cone-
wago.

- N 4 W 19
- N 19 W 25
- N 29 W 17
- N 25 W 26.9
- N 21 1/2 W 36
- N 12 W 60
- to Stone. 183.9-



Situate in Conewago township, York County, Containing One hundred and forty Nine Acres, eighty three perches, and Allowance, of Six per Cent - part of a larger tract of 280^{acs} 131^{pcs} & allowance. Surveyed by Thomas Cookson, then D.S on the 16th day of March 1746, in pursuance of a Warrant for—^{acs} granted to John Hussey, dated the ~~29th April 1745~~ Divided-24th May 1815, Examined and returned, for Solomon Machlin present owner of said part -March 17th 1823.

Jacob Kirk, Jr. D.S.

Samuel Cochran, Esq. S.G.

± Say 20th March 1744.

IN TESTIMONY that the above is a copy of the original remaining on file in the Department of Internal Affairs of Pennsylvania, made conformably to an Act of Assembly approved the 16th day of February, 1833, I have hereunto set my Hand and caused the Seal of said Department to be affixed at Harrisburg, this sixth day of April 1905.

Joseph D. Brown
Secretary of Internal Affairs.